



10694 Haddington Drive Thermal Roof Report

Environmental Conditions During Inspection

Sunset: 8:14 PM

Wind speed: 11 mph

Ambient temperature: 84 F

Humidity: 73%

Analysis

Based on the thermal anomalies observed/captured during the inspection, it is reasonable to conclude that the majority of the roof shows indications of water ingress.

The thermal data indicates minimal water ingress along the northwest, northeast, and eastern portions of the roof and a significant amount of suspected water ingress throughout the remainder of the roof, the majority of which appears to be concentrated in the central and southern portions. The southwest corner of the roof is covered; although this portion was unable to be inspected, it is reasonable to conclude that there is likely severe water ingress in this area.

Thermogram Interpretation

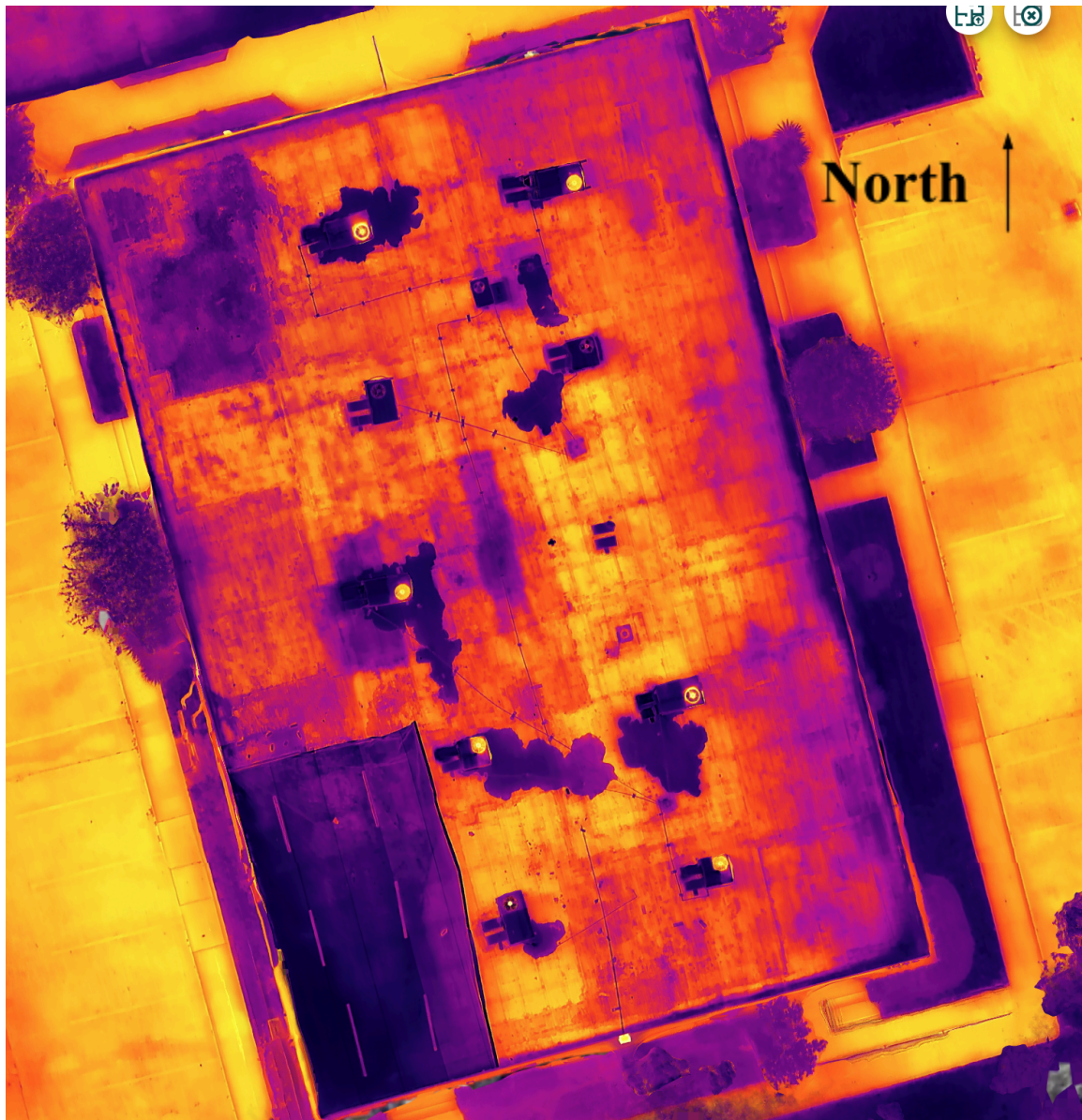
The following inspection photos contain two color palettes — Ironbow and Black Hot. The relationship between color and temperature is depicted in the bar to the right of each thermogram.

Areas of suspected moisture ingress appear warmer than the surrounding roof. So, please note that the various areas on the roof indicating cooler than the surrounding roof are likely areas where sediment/dirt/debris have accumulated on the roof.

Additionally, please note that, while some specific temperature measurements are included, exact temperatures are of secondary importance to overall visible temperature anomalies depicted by obvious color differences in the thermograms.



10694 Haddington Drive

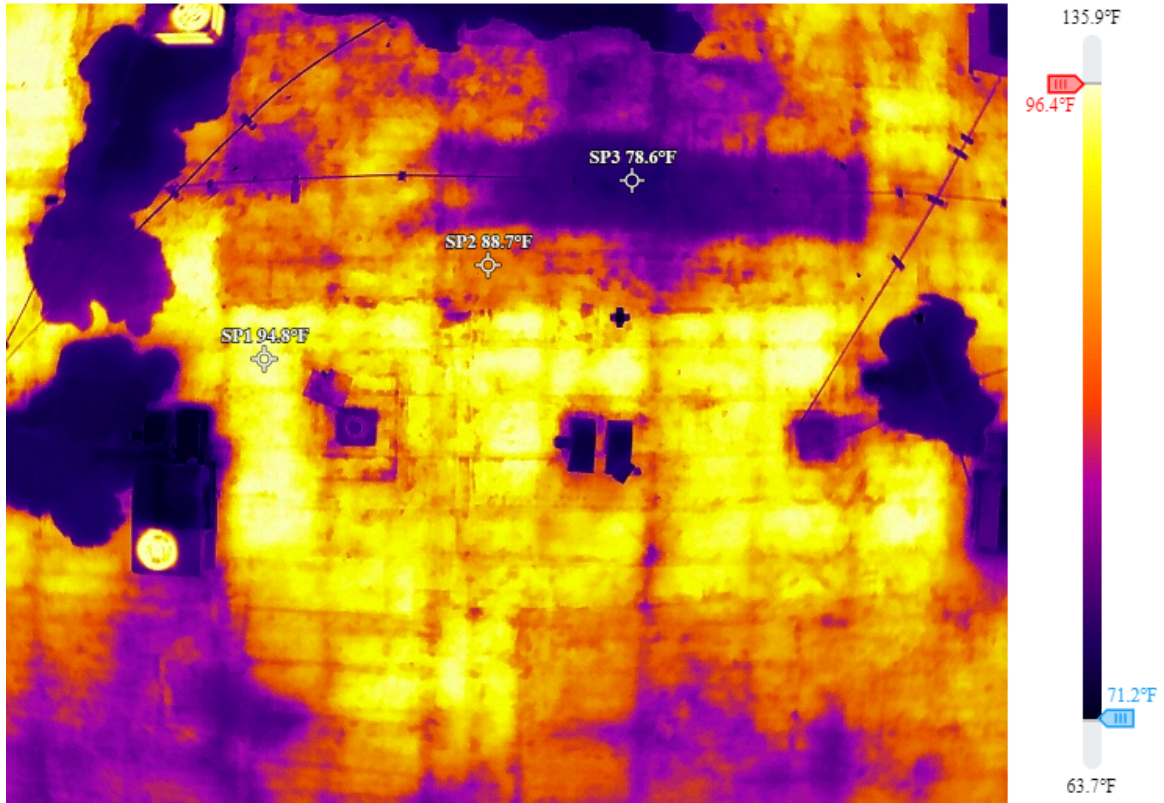


Above is a 2D thermal map of the roof. This map is comprised of 241 individual photos that have been stitched together to create a complete map of the roof overlaid with thermal information.

Prior to evaluating the following inspection photos, this map provides a comprehensive look at the condition of the roof in its entirety in terms of suspected moisture intrusion.



10694 Haddington Drive



Central.JPG

2024/05/25 21:40:46

Measurements

SP1	VALUE	94.8°F
SP2	VALUE	88.7°F
SP3	VALUE	78.6°F

Parameters

Distance	15 m
Humidity	73%

Emissivity	0.85
Reflected Temp	84.0°F

Image Info

Model	M3T
Serial Number	1581F5FJC242G00DRM3
Focal Length	9.1 mm
Aperture	f/1.0
Width	640
Height	512
Created	2024/05/25 21:40:46
Modified	2024/05/26 17:11:03
Coordinates	29.799849, 95.561772

Annotations

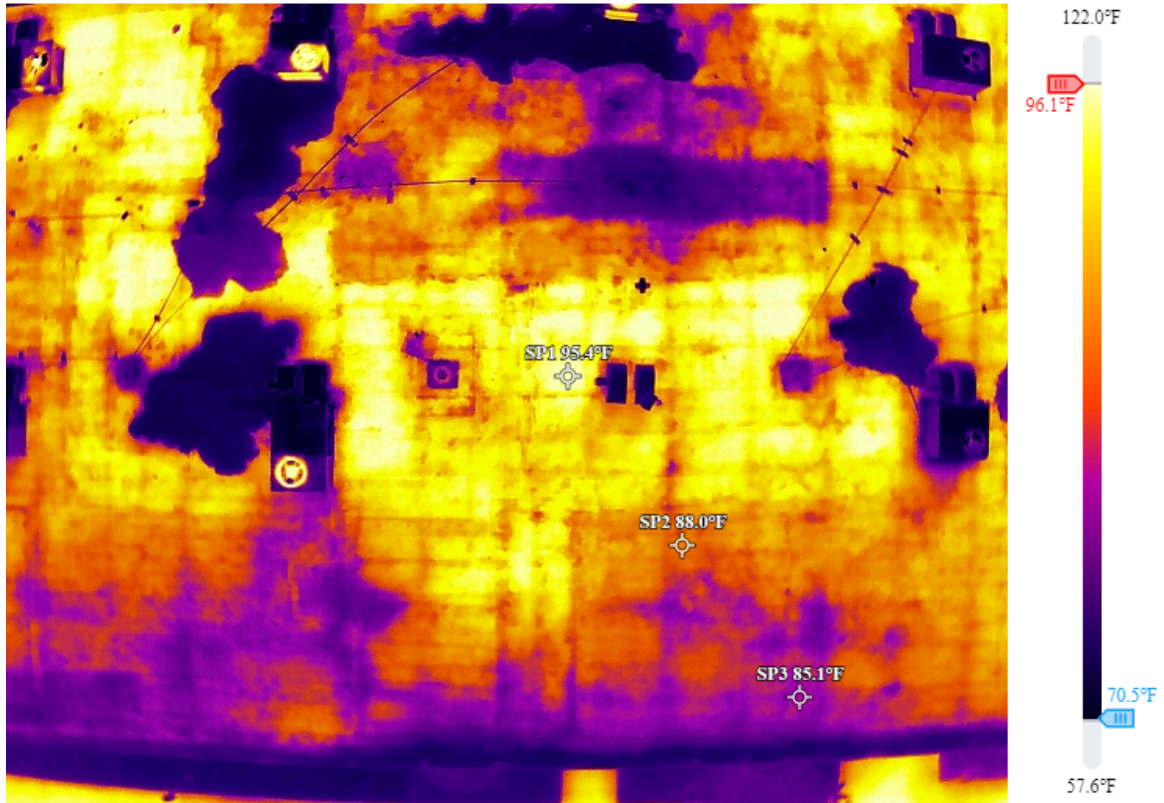
KEY	VALUE
SP1	Most moisture
SP2	Moderate moisture
SP3	Least moisture

Remarks

Majority of suspected moisture intrusion is concentrated in central portion of roof



10694 Haddington Drive



East.JPG

2024/05/25 21:17:45

Measurements

SP1	VALUE	95.4°F
SP2	VALUE	88.0°F
SP3	VALUE	85.1°F

Parameters

Distance	15 m
Humidity	73%

Emissivity	0.85
Reflected Temp	84.0°F

Image Info

Model	M3T
Serial Number	1581F5FJC242G00DRM3
Focal Length	9.1 mm
Aperture	f/1.0
Width	640
Height	512
Created	2024/05/25 21:17:45
Modified	2024/05/26 17:19:52
Coordinates	29.799842, 95.561763

Annotations

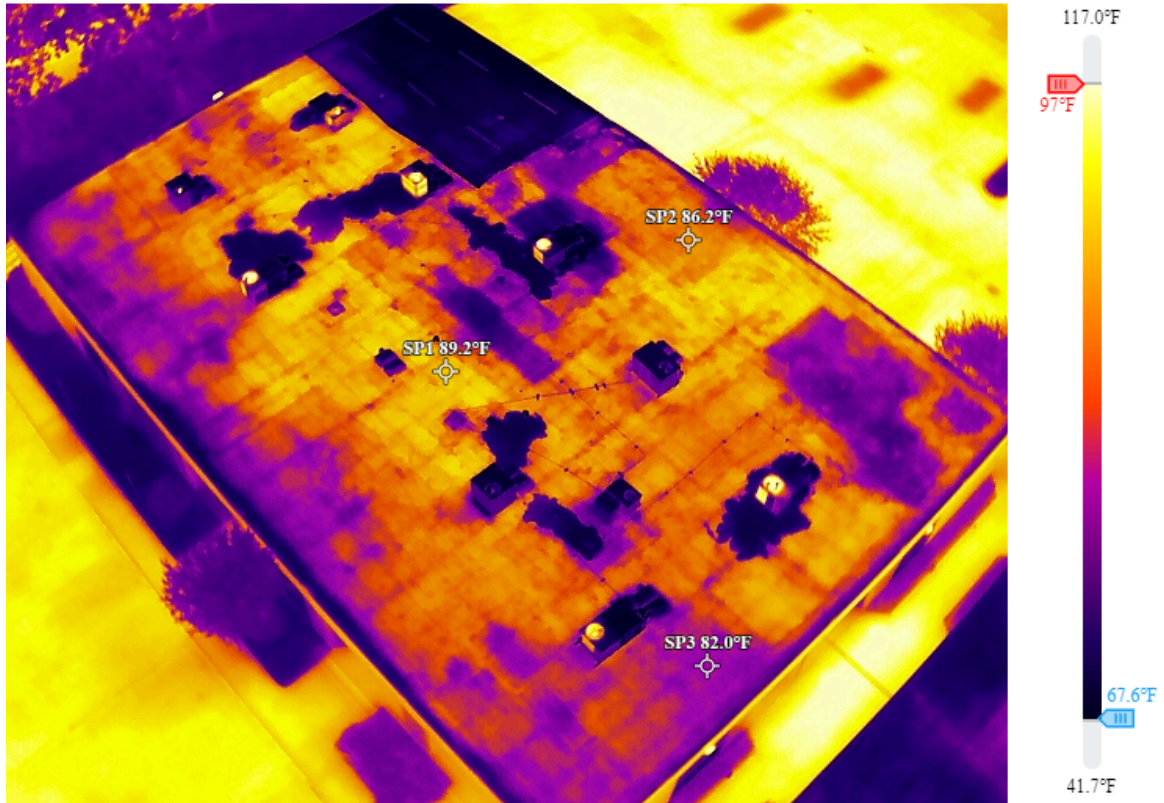
KEY	VALUE
SP1	Most moisture
SP2	Moderate moisture
SP3	Least moisture

Remarks

Cooler-colored area along eastern portion of roof (bottom of photo) indicates what appears to be a lack of water intrusion



10694 Haddington Drive



Northeast Whole.JPG

2024/05/25 21:38:09

Measurements

SP1	VALUE	89.2°F
SP2	VALUE	86.2°F
SP3	VALUE	82.0°F

Parameters

Distance	15 m
Humidity	73%

Emissivity	0.85
Reflected Temp	84.0°F

Image Info

Model	M3T
Serial Number	1581F5FJC242G00DRM3
Focal Length	9.1 mm
Aperture	f/1.0
Width	640
Height	512
Created	2024/05/25 21:38:09
Modified	2024/05/26 17:21:38
Coordinates	29.800115, 95.561678

Annotations

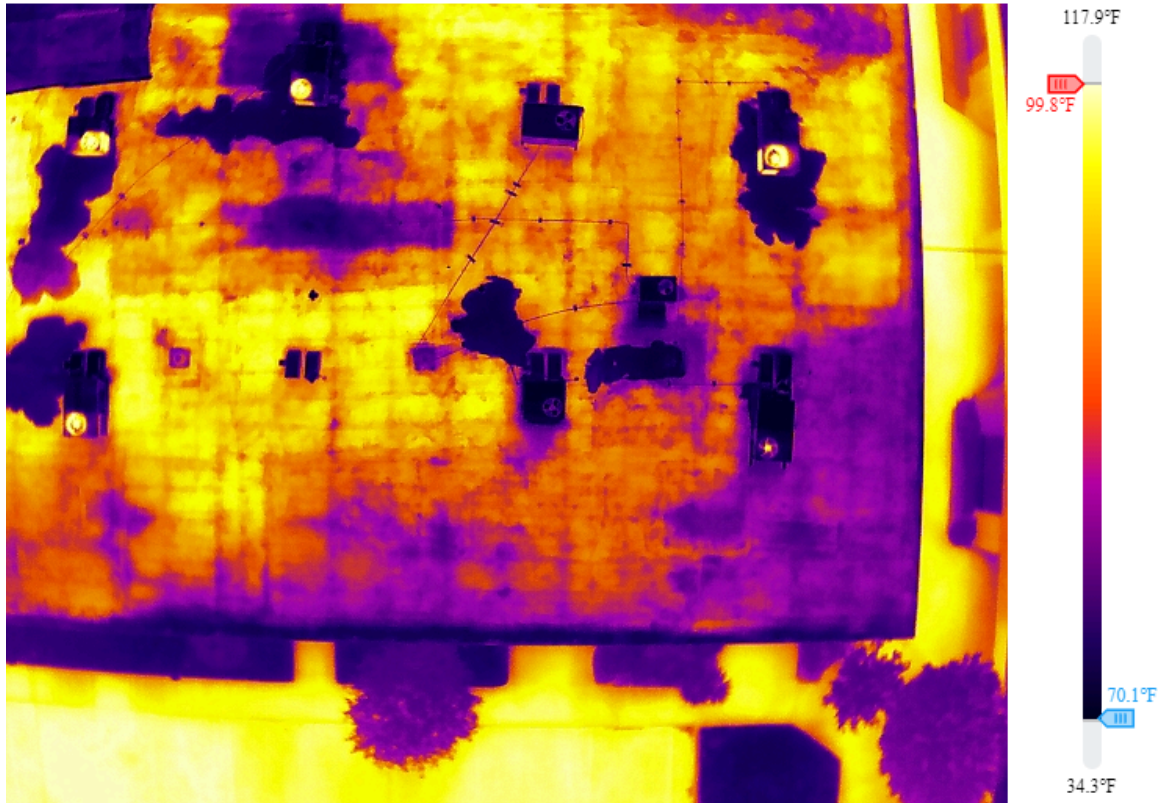
KEY	VALUE
SP1	Most moisture
SP2	Moderate moisture
SP3	Least moisture

Remarks

Eastern portion of roof perimeter appears to have minimal moisture than the majority of surrounding roof areas



10694 Haddington Drive



Northeast.JPG

2024/05/25 21:13:38

Parameters

Distance	15 m
Humidity	73%
Emissivity	0.85
Reflected Temp	84.0°F

Image Info

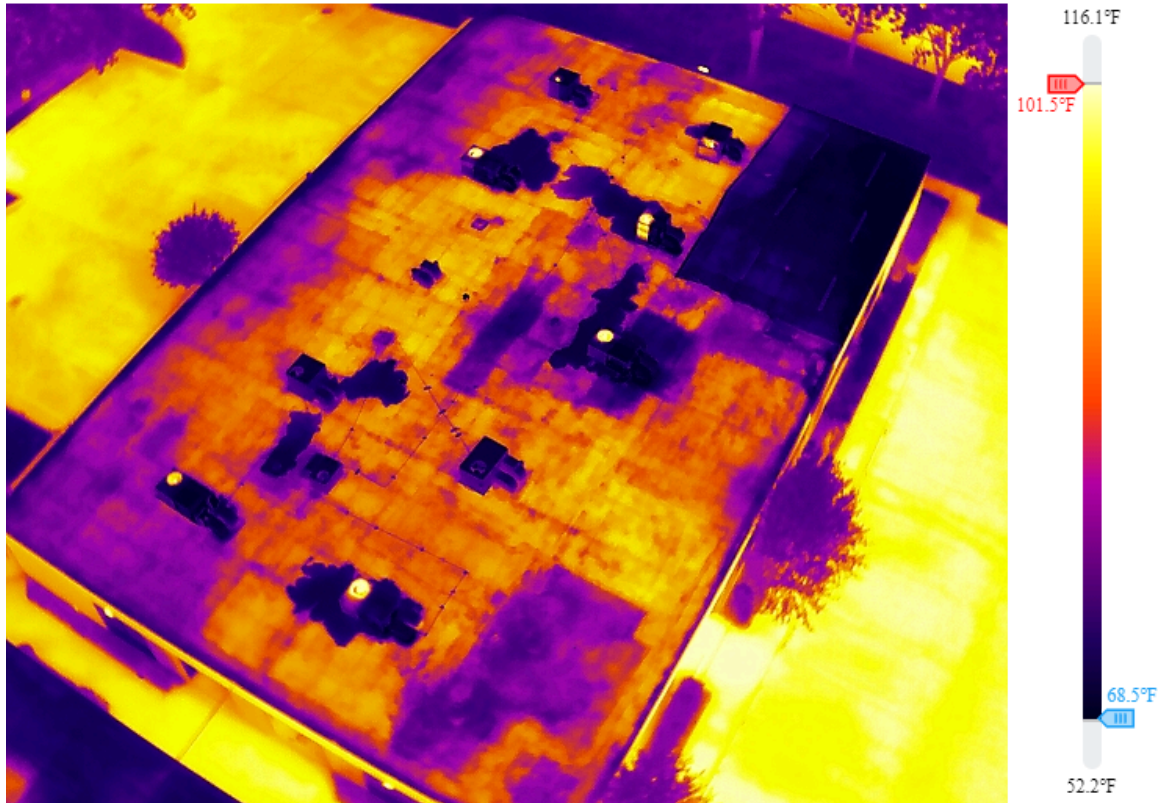
Model	M3T
Serial Number	1581F5FJC242G00DRM3
Focal Length	9.1 mm
Aperture	f/1.0
Width	640
Height	512
Created	2024/05/25 21:13:38
Modified	2024/05/26 17:24:09
Coordinates	29.799927, 95.561779

Remarks

Northwest corner appears to have minimal moisture



10694 Haddington Drive



Northwest Whole.JPG

2024/05/25 21:37:47

Parameters

Distance	15 m
Humidity	73%
Emissivity	0.85
Reflected Temp	84.0°F

Image Info

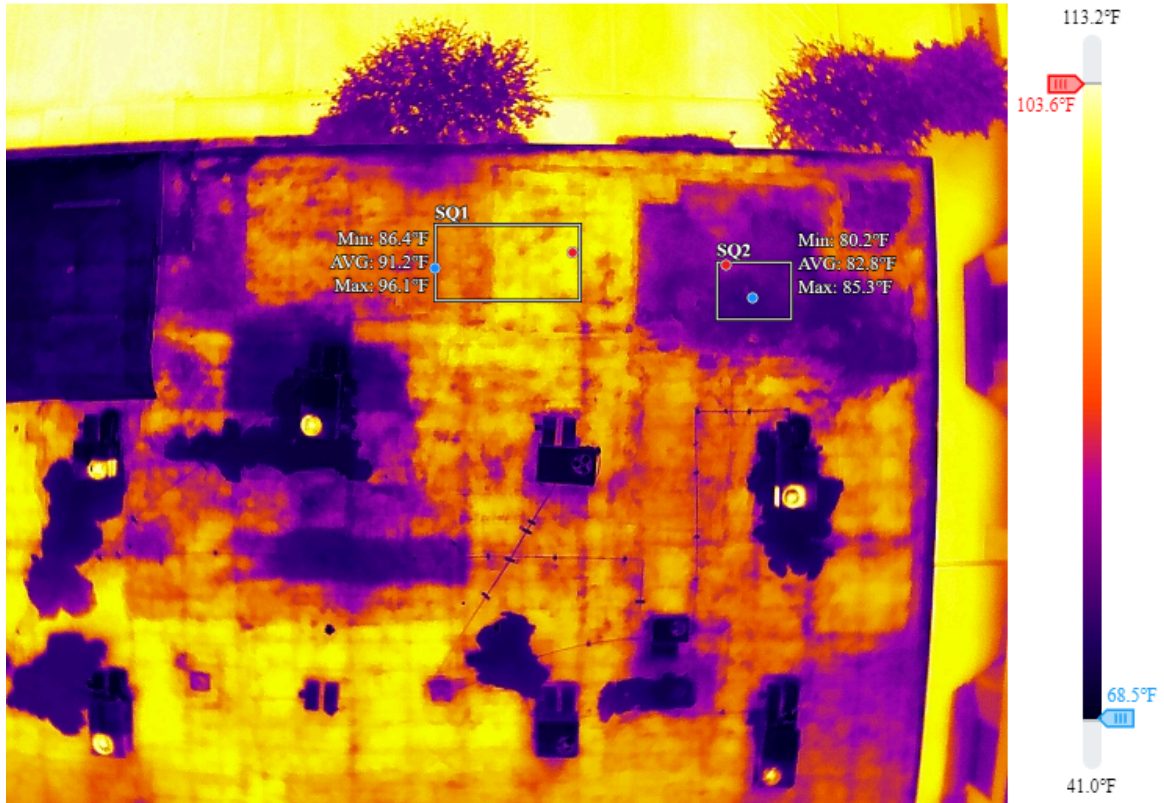
Model	M3T
Serial Number	1581F5FJC242G00DRM3
Focal Length	9.1 mm
Aperture	f/1.0
Width	640
Height	512
Created	2024/05/25 21:37:47
Modified	2024/05/26 17:26:19
Coordinates	29.800065, 95.562066

Remarks

Most of northwest corner appears to have minimal moisture with exception of the far western edge



10694 Haddington Drive



Northwest.JPG

2024/05/25 21:12:46

Measurements

SQ1	MIN	86.4°F
	AVERAGE	91.2°F
	MAX	96.1°F
SQ2	MIN	80.2°F
	AVERAGE	82.8°F
	MAX	85.3°F

Parameters

Distance	15 m
Humidity	73%
Emissivity	0.85
Reflected Temp	84.0°F

Image Info

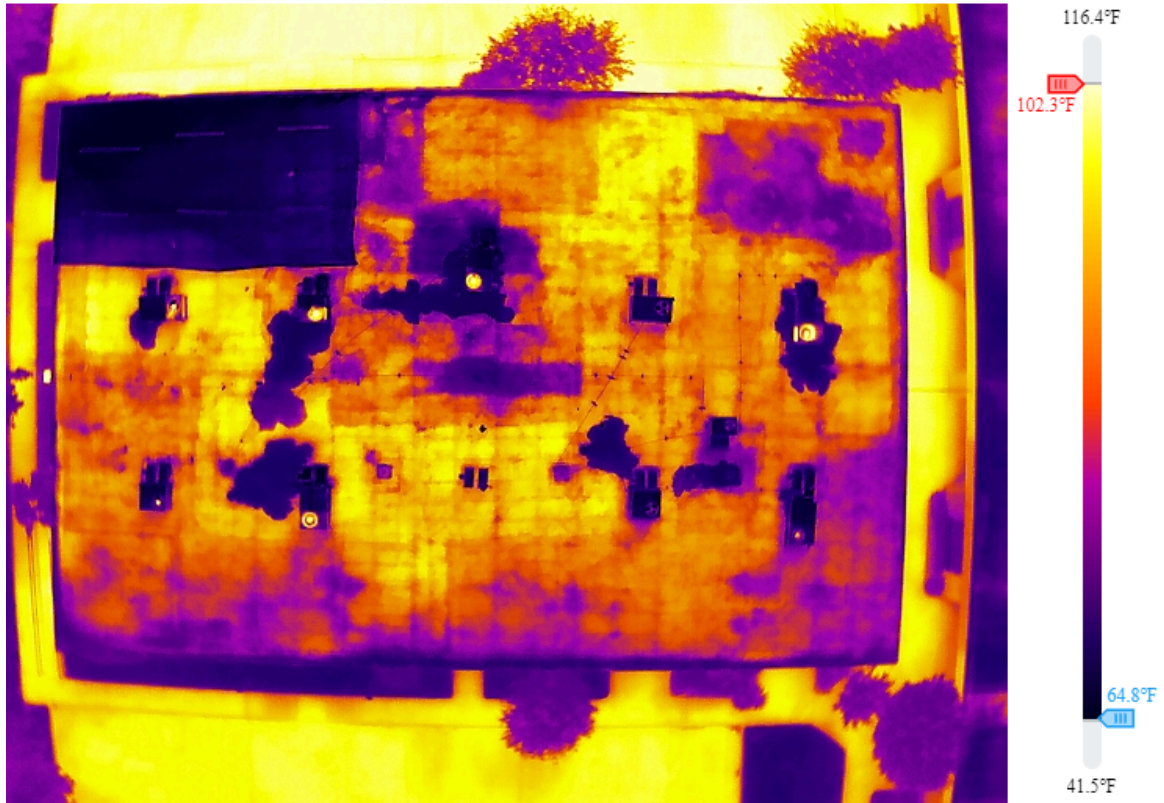
Model	M3T
Serial Number	1581F5FJC242G00DRM3
Focal Length	9.1 mm
Aperture	f/1.0
Width	640
Height	512
Created	2024/05/25 21:12:46
Modified	2024/05/26 17:33:09
Coordinates	29.799899, 95.561887

Annotations

KEY	VALUE
SQ1	Moisture affected
SQ2	Not moisture affected



10694 Haddington Drive



Overview.JPG

2024/05/25 21:16:10

Parameters

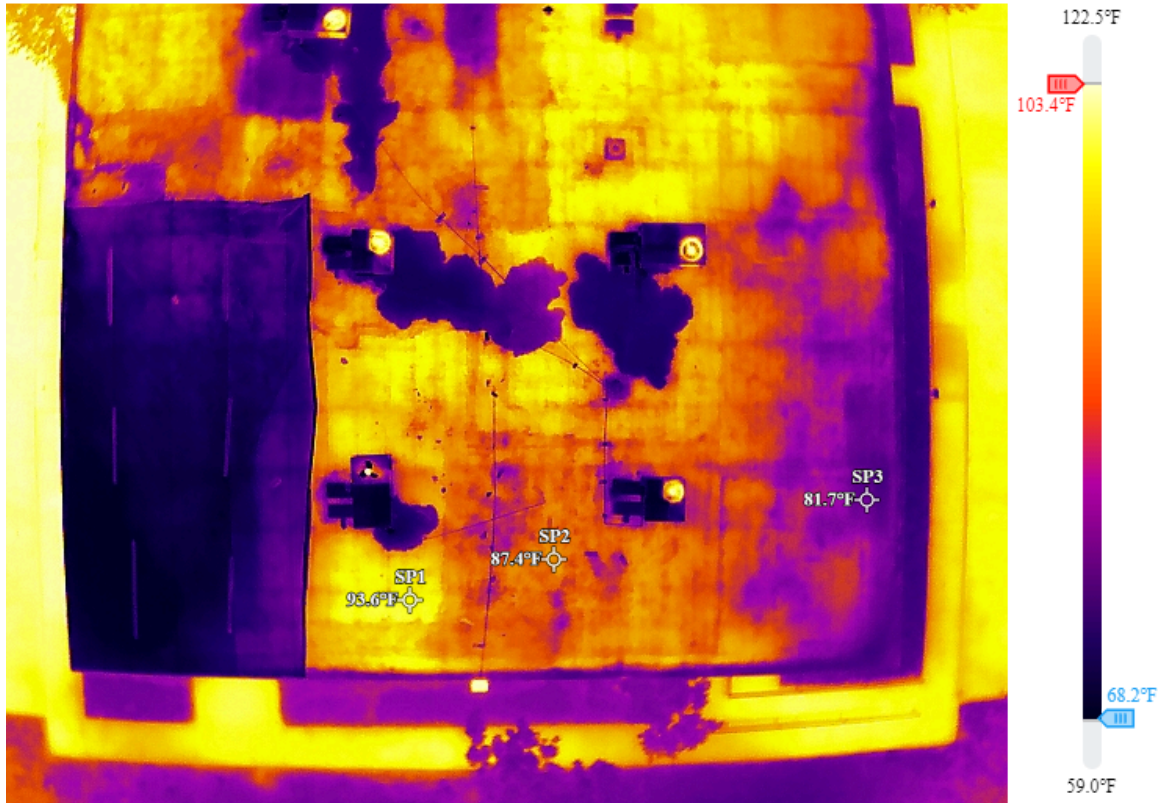
Distance	20 m
Humidity	73%
Emissivity	0.85
Reflected Temp	84.0°F

Image Info

Model	M3T
Serial Number	1581F5FJC242G00DRM3
Focal Length	9.1 mm
Aperture	f/1.0
Width	640
Height	512
Created	2024/05/25 21:16:10
Modified	2024/05/26 17:33:40
Coordinates	29.799876, 95.561815



10694 Haddington Drive



South.JPG

2024/05/25 21:39:35

Measurements

SP1	VALUE	93.6°F
SP2	VALUE	87.4°F
SP3	VALUE	81.7°F

Parameters

Distance	15 m
Humidity	73%

Emissivity	0.85
Reflected Temp	84.0°F

Image Info

Model	M3T
Serial Number	1581F5FJC242G00DRM3
Focal Length	9.1 mm
Aperture	f/1.0
Width	640
Height	512
Created	2024/05/25 21:39:35
Modified	2024/05/26 17:35:09
Coordinates	29.799750, 95.561770

Annotations

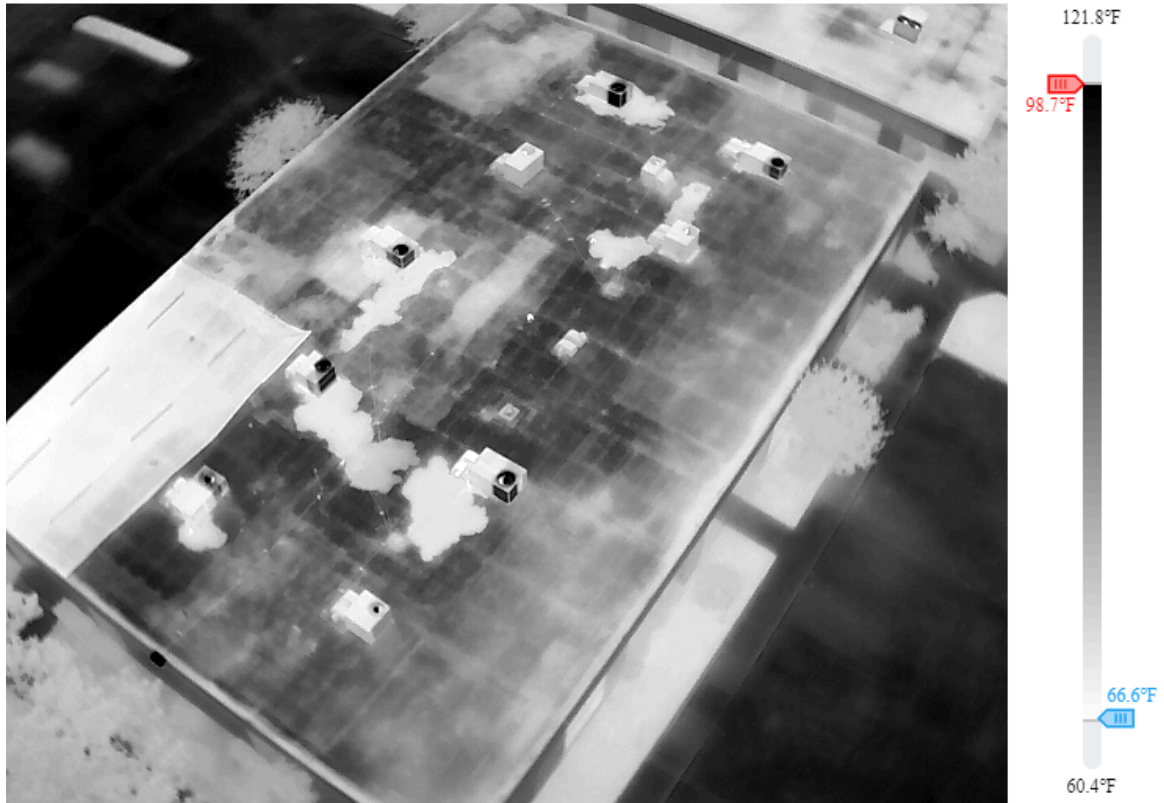
KEY	VALUE
SP1	Most moisture
SP2	Moderate moisture
SP3	Least moisture

Remarks

Cool area at southwest corner appears to be tarp (likely covering severely moisture damaged area)



10694 Haddington Drive



Southeast Whole.JPG

2024/05/25 21:38:32

Parameters

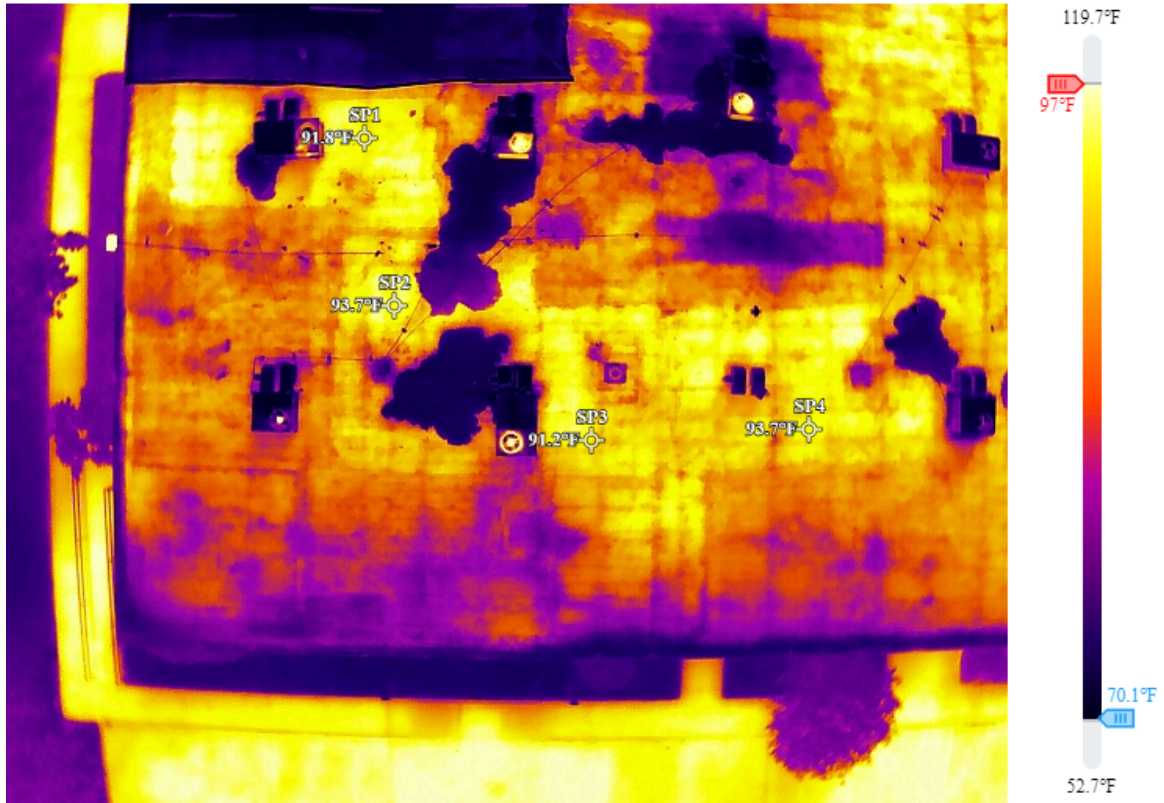
Distance	15 m
Humidity	73%
Emissivity	0.85
Reflected Temp	84.0°F

Image Info

Model	M3T
Serial Number	1581F5FJC242G00DRM3
Focal Length	9.1 mm
Aperture	f/1.0
Width	640
Height	512
Created	2024/05/25 21:38:32
Modified	2024/05/26 17:39:18
Coordinates	29.799657, 95.561543



10694 Haddington Drive



Southeast.JPG

2024/05/25 21:13:23

Measurements

SP1	VALUE	91.8°F
SP2	VALUE	93.7°F
SP3	VALUE	91.2°F
SP4	VALUE	93.7°F

Parameters

Distance	15 m
----------	------

Humidity	73%
Emissivity	0.85
Reflected Temp	84.0°F

Image Info

Model	M3T
Serial Number	1581F5FJC242G00DRM3
Focal Length	9.1 mm
Aperture	f/1.0
Width	640
Height	512
Created	2024/05/25 21:13:23
Modified	2024/05/26 17:37:01
Coordinates	29.799805, 95.561750

Annotations

KEY	VALUE
SP1	Moisture affected
SP2	Moisture affected
SP3	Moisture affected
SP4	Moisture affected



10694 Haddington Drive



Southwest Whole.JPG

2024/05/25 21:38:55

Parameters

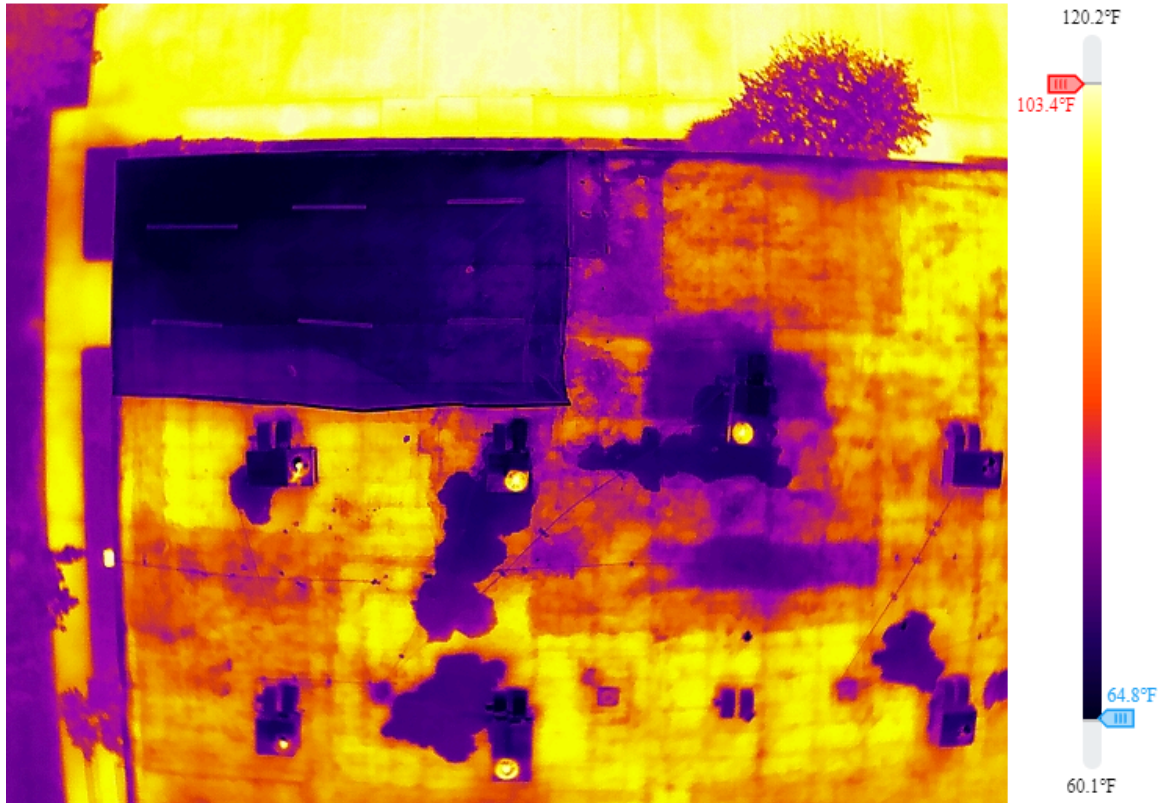
Distance	15 m
Humidity	73%
Emissivity	0.85
Reflected Temp	84.0°F

Image Info

Model	M3T
Serial Number	1581F5FJC242G00DRM3
Focal Length	9.1 mm
Aperture	f/1.0
Width	640
Height	512
Created	2024/05/25 21:38:55
Modified	2024/05/26 17:38:36
Coordinates	29.799614, 95.561978



10694 Haddington Drive



Southwest.JPG

2024/05/25 21:13:01

Parameters

Distance	15 m
Humidity	73%
Emissivity	0.85
Reflected Temp	84.0°F

Image Info

Model	M3T
Serial Number	1581F5FJC242G00DRM3
Focal Length	9.1 mm
Aperture	f/1.0
Width	640
Height	512
Created	2024/05/25 21:13:01
Modified	2024/05/26 17:39:58
Coordinates	29.799782, 95.561856

Remarks

Cool area at southwest corner appears to be tarp (likely covering severe moisture damaged area)