



## 3003 Swiss Ave Thermal Roof Report

### **Environmental Conditions During Inspection**

Sunset: 8:27 PM

Wind speed: 5 mph

Ambient temperature: 87 F

Humidity: 52%

### **Analysis**

Based on the thermal anomalies observed/captured during the inspection, it is reasonable to conclude that a significant portion of the roof shows indications of water ingress, particularly around the edges/corners.

The thermal data indicates signs of water ingress along all major roof edges and along the seam running from northeast to southwest. A significant amount of suspected moisture was also observed scattered throughout the remaining portion of the roof in various places.

Based on the preliminary information received on the construction project, it is reasonable to conclude that the reported exterior issues could have been caused by significant moisture ingress in the roof.

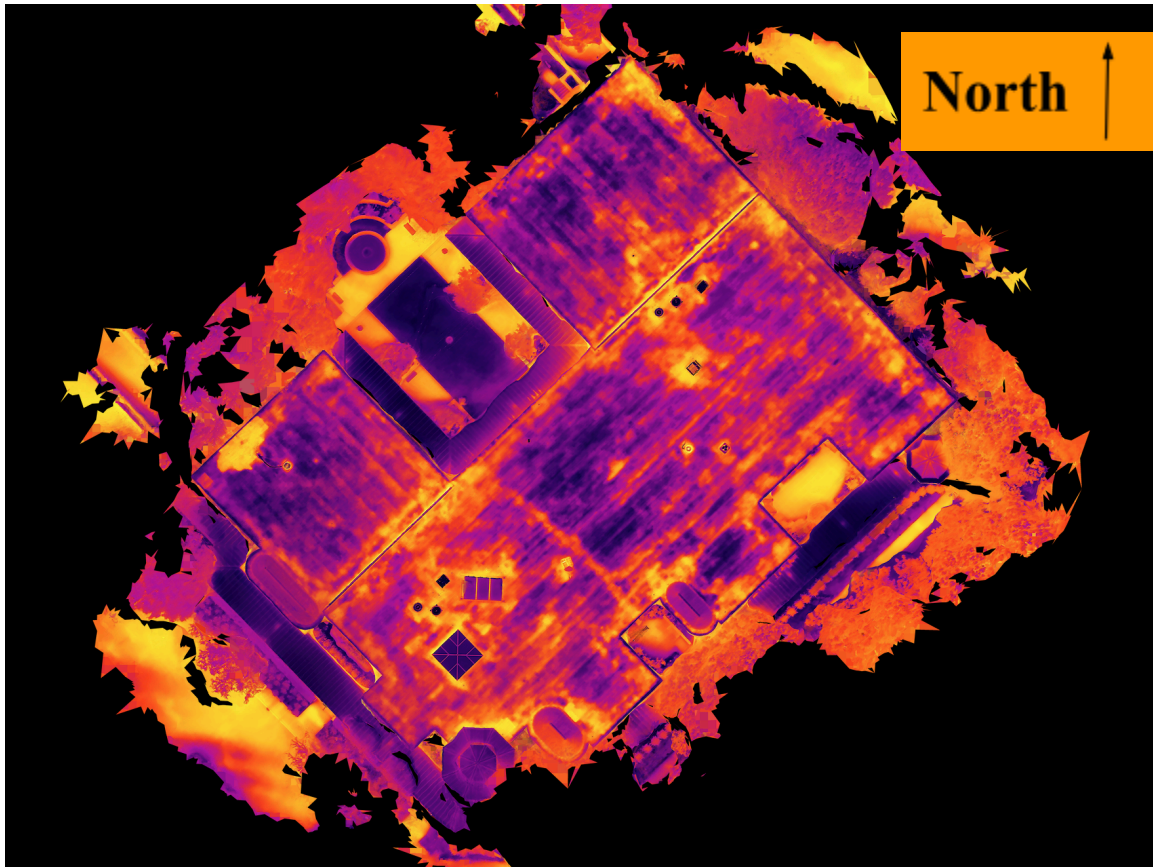
### **Thermogram Interpretation**

The following inspection photos contain two color palettes — Iron Red and Black Hot. The relationship between color and temperature is depicted in the bar to the right of each thermogram. Please note that areas of suspected moisture ingress appear warmer than the surrounding roof.

Additionally, please note that, while some specific temperature measurements are included, exact temperatures are of secondary importance to overall visible temperature anomalies depicted by obvious color differences in the thermograms. In the roofing context, these measurements are included simply to provide additional information on the extent of the thermal anomalies observed.



3003 Swiss Ave

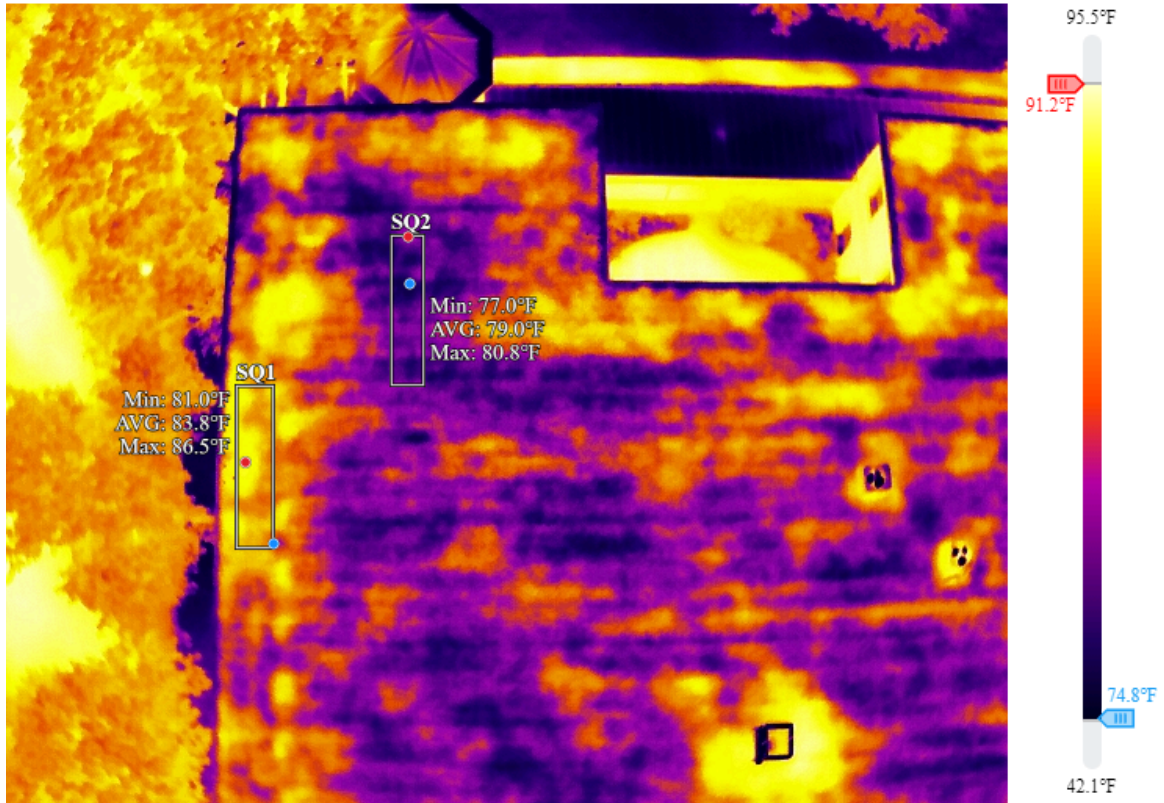


Above is a 2D thermal map of the roof. This map is comprised of 282 individual photos that have been stitched together to create a complete map of the roof overlaid with thermal information.

Prior to evaluating the following inspection photos, this map provides a comprehensive look at the condition of the roof in its entirety in terms of suspected moisture intrusion. This map will also aid in orientation when different portions of the roof are mentioned (by file name) below.



3003 Swiss Ave



East (Swiss).JPG

2024/05/26 21:59:57

### Measurements

SQ1	MIN	81.0°F
	AVERAGE	83.8°F
	MAX	86.5°F
SQ2	MIN	77.0°F
	AVERAGE	79.0°F
	MAX	80.8°F

**Parameters**

Distance	15 m
Humidity	52%
Emissivity	0.85
Reflected Temp	87.0°F

**Image Info**

Model	M3T
Serial Number	1581F5FJC242G00DRM3
Focal Length	9.1 mm
Aperture	f/1.0
Width	640
Height	512
Created	2024/05/26 21:59:57
Modified	2024/05/27 09:08:44
Coordinates	32.789874, 96.784654

**Annotations**

KEY	VALUE
SQ1	Moisture affected
SQ2	Not moisture affected

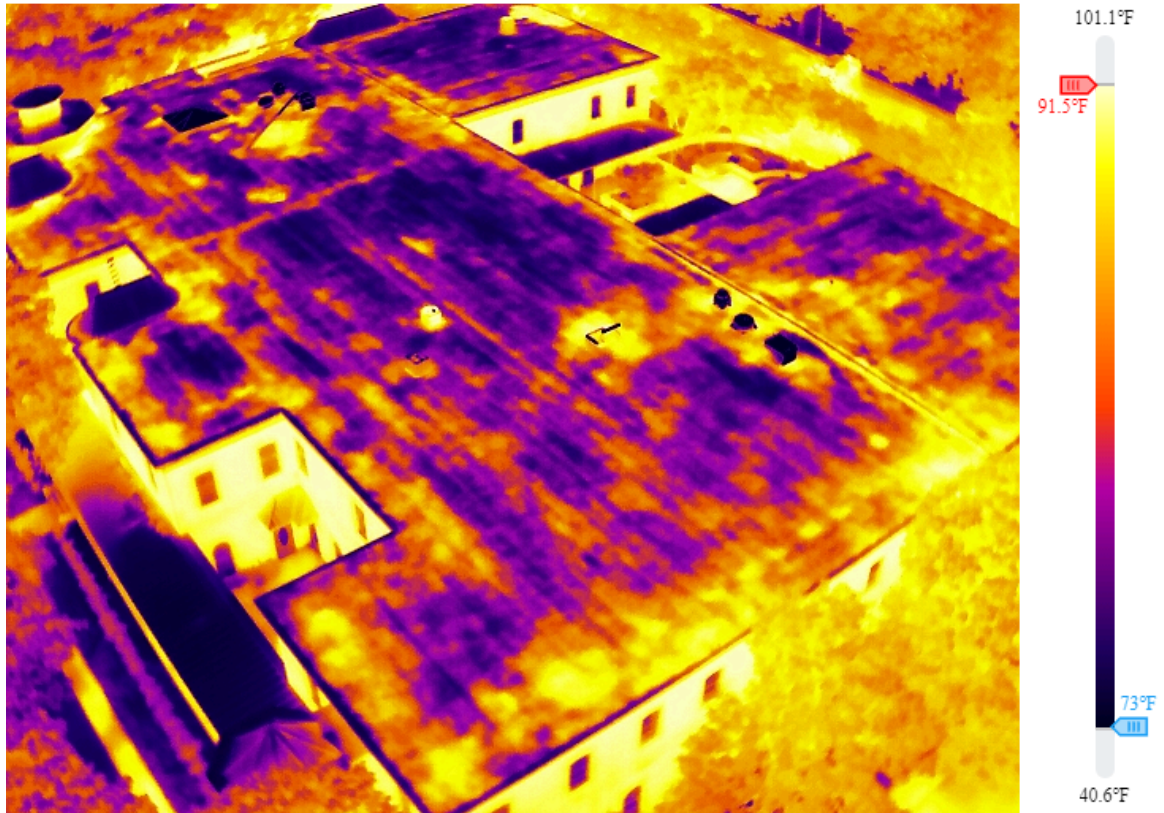
**Remarks**

Suspected moisture present along eastern edge of roof





3003 Swiss Ave



East Corner View.JPG

2024/05/26 21:41:25

### Parameters

Distance	18 m
Humidity	52%
Emissivity	0.85
Reflected Temp	87.0°F

**Image Info**

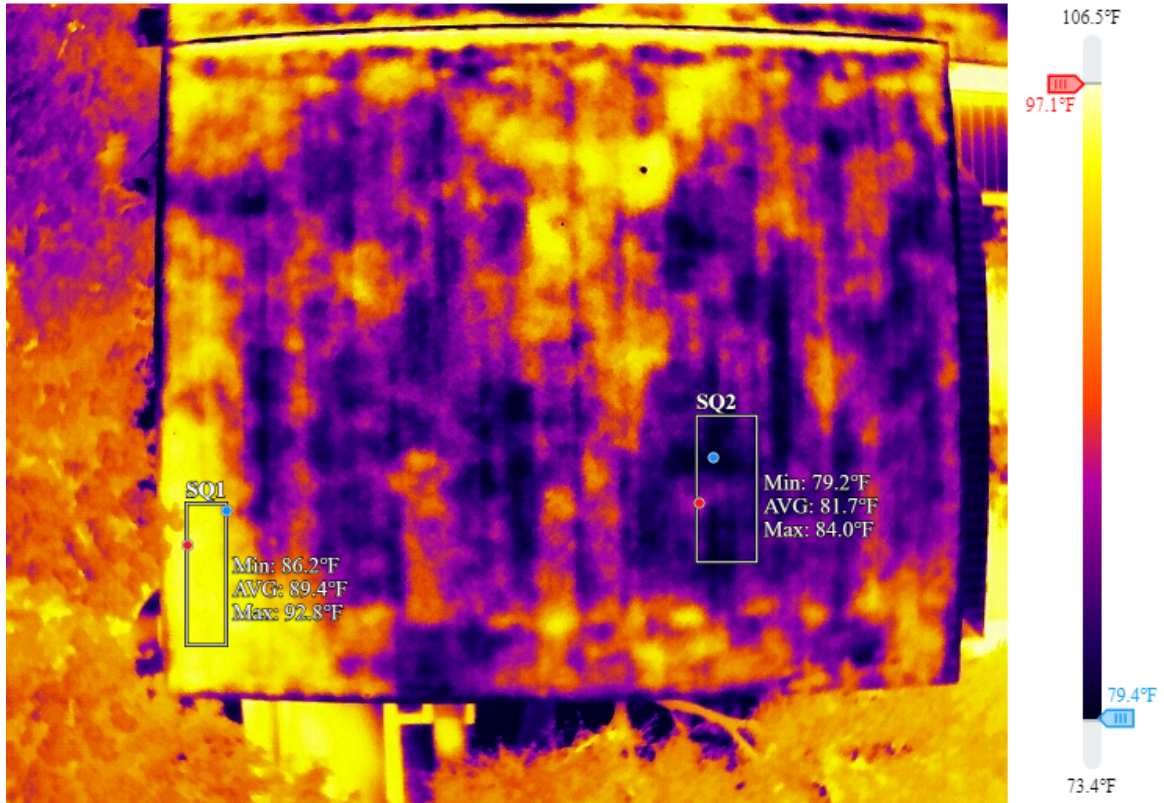
Model	M3T
Serial Number	1581F5FJC242G00DRM3
Focal Length	9.1 mm
Aperture	f/1.0
Width	640
Height	512
Created	2024/05/26 21:41:25
Modified	2024/05/27 09:34:12
Coordinates	32.789895, 96.784241

**Remarks**

Majority of suspected moisture is concentrated along edges of roof



3003 Swiss Ave



North (Cobb).JPG

2024/05/26 21:37:38

### Measurements

SQ1	MIN	86.2°F
	AVERAGE	89.4°F
	MAX	92.8°F
SQ2	MIN	79.2°F
	AVERAGE	81.7°F
	MAX	84.0°F

**Parameters**

Distance	15 m
Humidity	52%
Emissivity	0.85
Reflected Temp	87.0°F

**Image Info**

Model	M3T
Serial Number	1581F5FJC242G00DRM3
Focal Length	9.1 mm
Aperture	f/1.0
Width	640
Height	512
Created	2024/05/26 21:37:38
Modified	2024/05/27 09:35:29
Coordinates	32.790009, 96.784823

**Annotations**

KEY	VALUE
SQ1	Moisture affected
SQ2	Not moisture affected

**Remarks**

Significant amount of suspected moisture ingress present in northern corner



3003 Swiss Ave



North Corner View.JPG

2024/05/26 21:41:55

**Parameters**

Distance	18 m
Humidity	52%
Emissivity	0.85
Reflected Temp	87.0°F

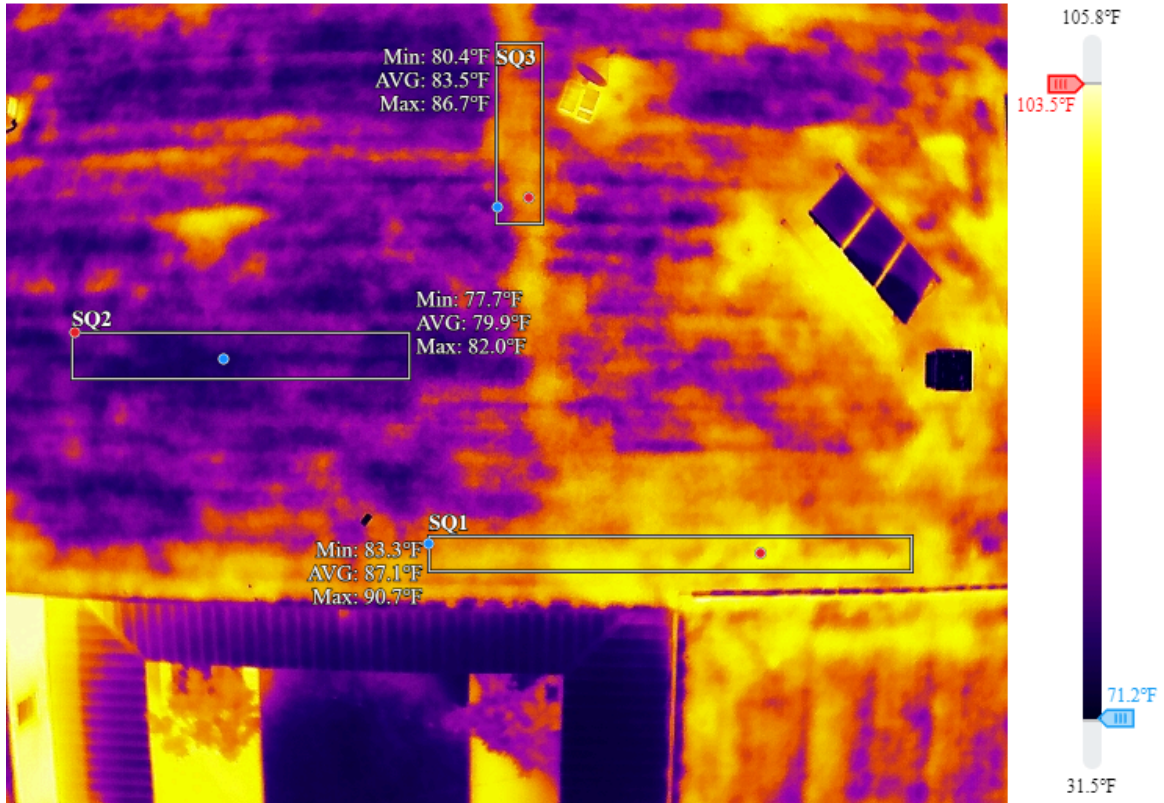
**Image Info**

Model	M3T
Serial Number	1581F5FJC242G00DRM3
Focal Length	9.1 mm
Aperture	f/1.0
Width	640
Height	512
Created	2024/05/26 21:41:55
Modified	2024/05/27 09:33:24
Coordinates	32.790363, 96.784761





3003 Swiss Ave



Northwest (Courtyard) 1.JPG

2024/05/26 21:35:20

**Measurements**

SQ1	MIN	83.3°F
	AVERAGE	87.1°F
	MAX	90.7°F
SQ2	MIN	77.7°F
	AVERAGE	79.9°F
	MAX	82.0°F

SQ3	MIN	80.4°F
	AVERAGE	83.5°F
	MAX	86.7°F

**Parameters**

Distance	15 m
Humidity	52%
Emissivity	0.85
Reflected Temp	87.0°F

**Image Info**

Model	M3T
Serial Number	1581F5FJC242G00DRM3
Focal Length	9.1 mm
Aperture	f/1.0
Width	640
Height	512
Created	2024/05/26 21:35:20
Modified	2024/05/27 09:11:12
Coordinates	32.789732, 96.784915

**Annotations**

KEY	VALUE
SQ1	Most moisture
SQ2	Least moisture

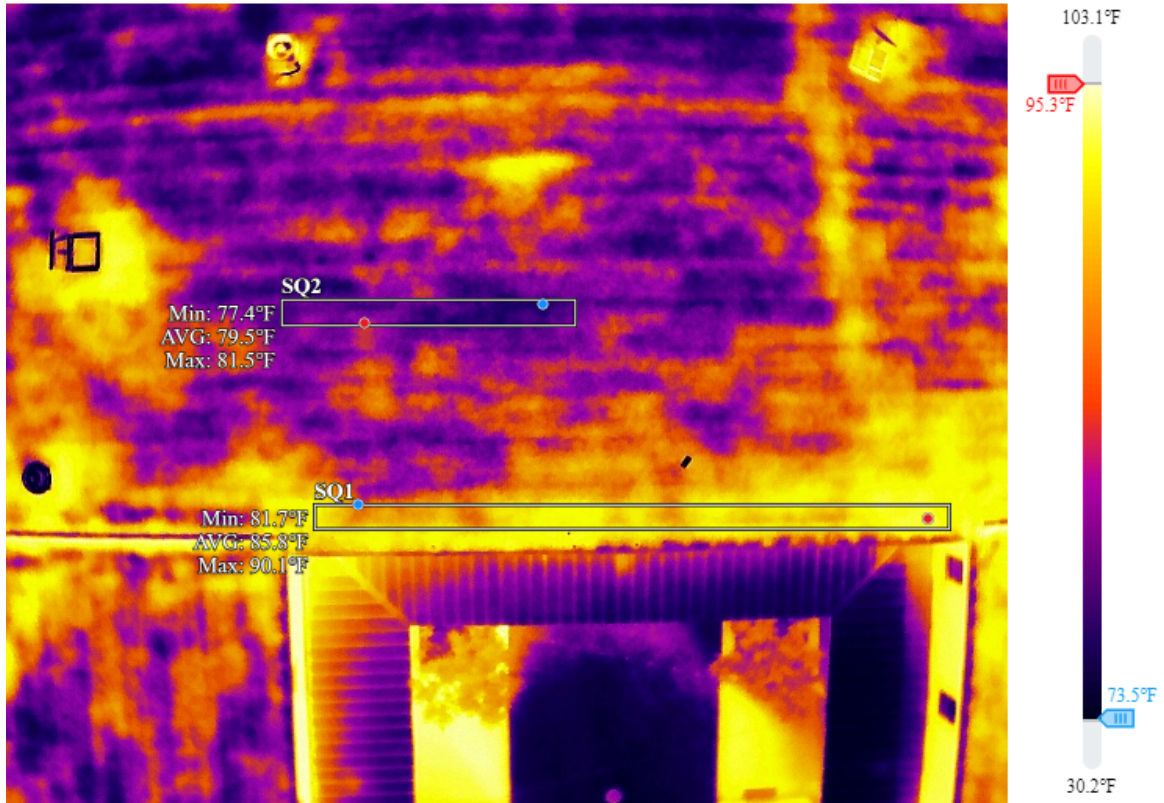
SQ3	Moderate moisture
-----	-------------------

**Remarks**

Significant amount of suspected moisture along northwest/west edge close to courtyard area



3003 Swiss Ave



Northwest (Courtyard) 2.JPG

2024/05/26 21:36:17

### Measurements

SQ1	MIN	81.7°F
	AVERAGE	85.8°F
	MAX	90.1°F
SQ2	MIN	77.4°F
	AVERAGE	79.5°F
	MAX	81.5°F

**Parameters**

Distance	18 m
Humidity	52%
Emissivity	0.85
Reflected Temp	87.0°F

**Image Info**

Model	M3T
Serial Number	1581F5FJC242G00DRM3
Focal Length	9.1 mm
Aperture	f/1.0
Width	640
Height	512
Created	2024/05/26 21:36:17
Modified	2024/05/27 09:20:39
Coordinates	32.789798, 96.784861

**Annotations**

KEY	VALUE
SQ1	Moisture affected
SQ2	Not moisture affected

**Remarks**

Significant amount of suspected moisture along northwest/west edge close to courtyard area



3003 Swiss Ave



Overview.JPG

2024/05/26 21:42:58

### Parameters

Distance	25 m
Humidity	52%
Emissivity	0.85
Reflected Temp	87.0°F

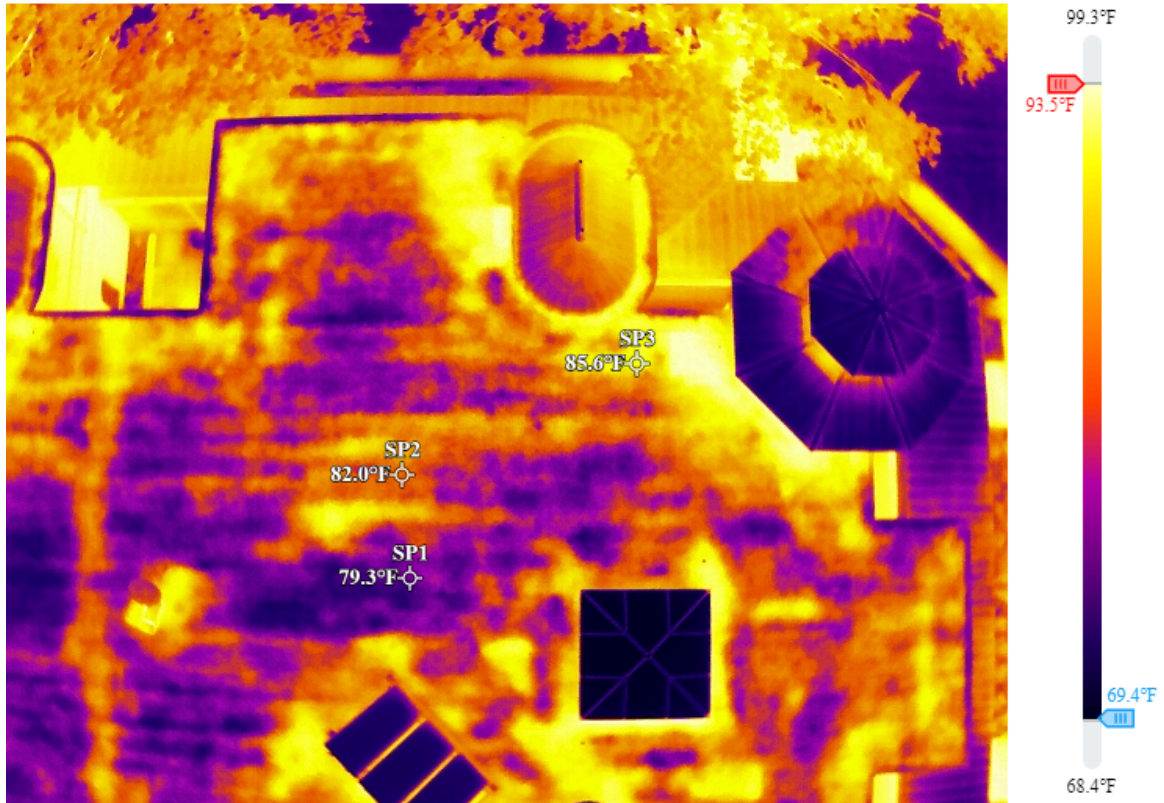


**Image Info**

Model	M3T
Serial Number	1581F5FJC242G00DRM3
Focal Length	9.1 mm
Aperture	f/1.0
Width	640
Height	512
Created	2024/05/26 21:42:58
Modified	2024/05/27 09:32:54
Coordinates	32.789745, 96.784866



3003 Swiss Ave



South (Swiss & Oak).JPG

2024/05/26 22:00:55

### Measurements

SP1	VALUE	79.3°F
SP2	VALUE	82.0°F
SP3	VALUE	85.6°F

### Parameters

Distance	15 m
Humidity	52%

Emissivity	0.85
Reflected Temp	87.0°F

**Image Info**

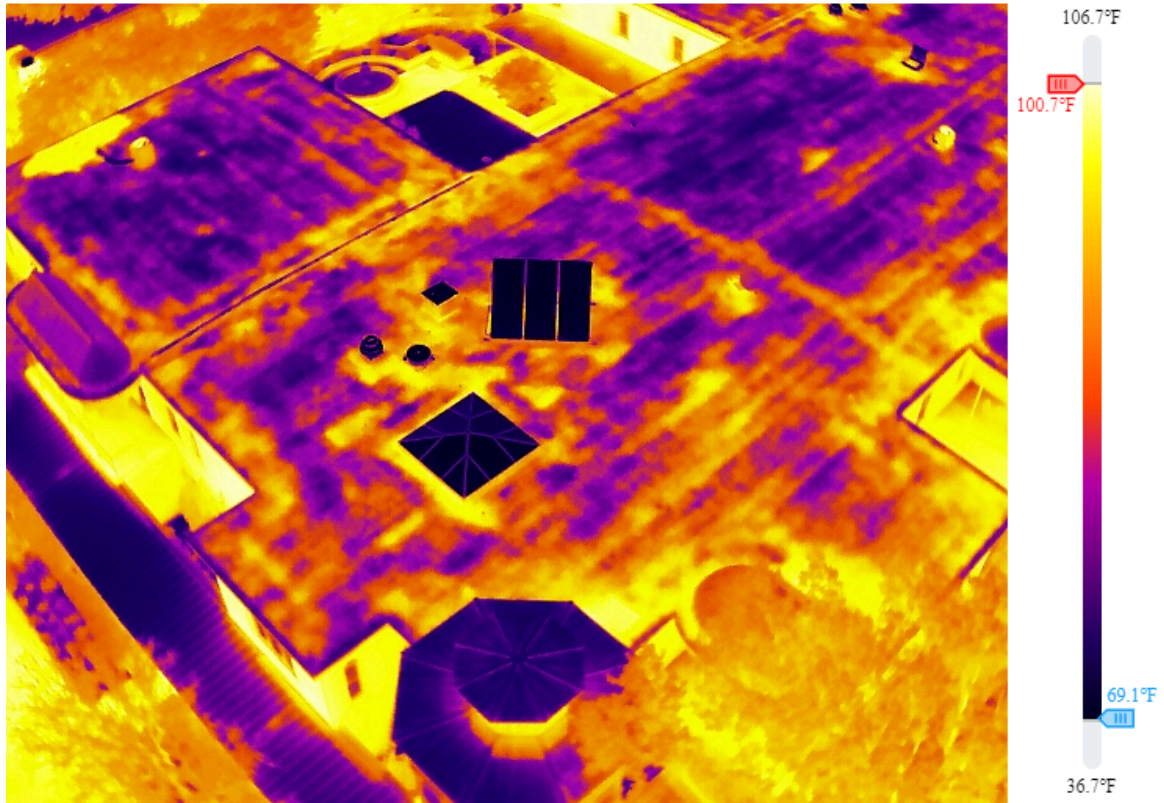
Model	M3T
Serial Number	1581F5FJC242G00DRM3
Focal Length	9.1 mm
Aperture	f/1.0
Width	640
Height	512
Created	2024/05/26 22:00:55
Modified	2024/05/27 09:27:54
Coordinates	32.789603, 96.784945

**Annotations**

KEY	VALUE
SP1	Least moisture
SP2	Moderate moisture
SP3	Most moisture



3003 Swiss Ave



South Corner View.JPG

2024/05/26 21:40:37

**Parameters**

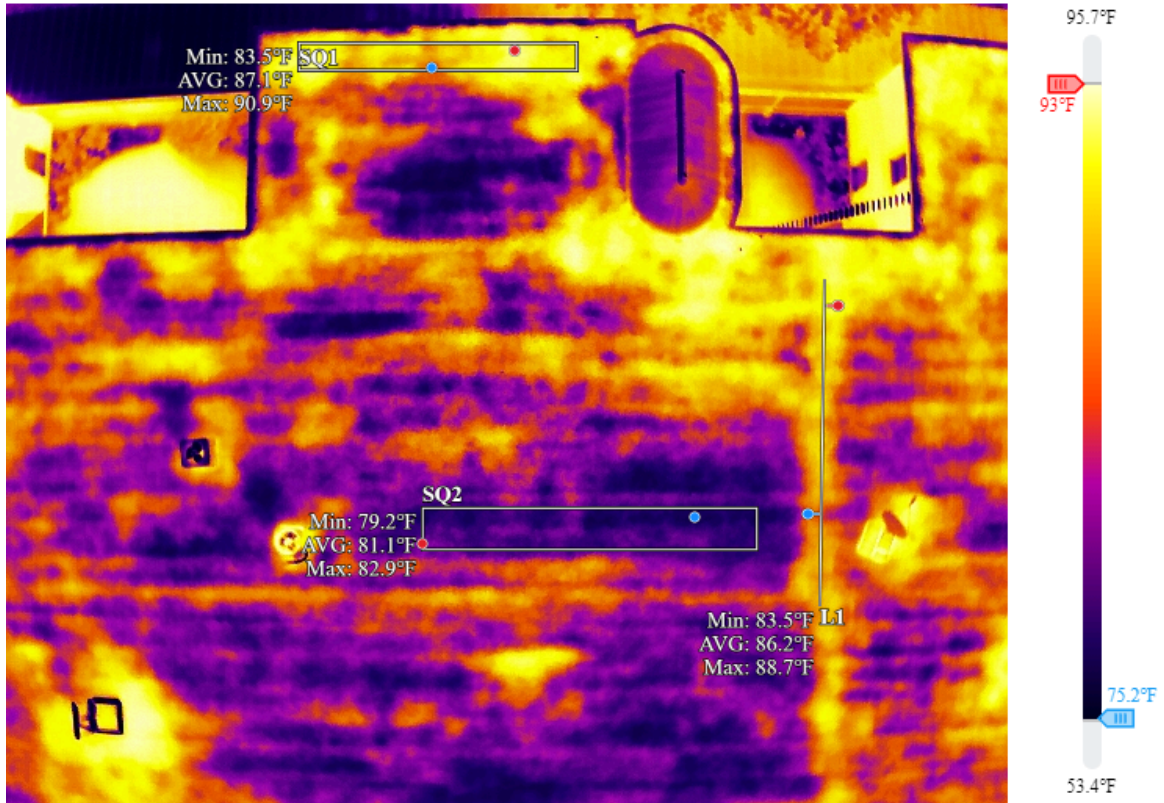
Distance	18 m
Humidity	52%
Emissivity	0.85
Reflected Temp	87.0°F

**Image Info**

Model	M3T
Serial Number	1581F5FJC242G00DRM3
Focal Length	9.1 mm
Aperture	f/1.0
Width	640
Height	512
Created	2024/05/26 21:40:37
Modified	2024/05/27 09:35:54
Coordinates	32.789338, 96.784939



3003 Swiss Ave



Southeast (Swiss).JPG

2024/05/26 21:36:01

### Measurements

SQ1	MIN	83.5°F
	AVERAGE	87.1°F
	MAX	90.9°F
L1	MIN	83.5°F
	AVERAGE	86.2°F
	MAX	88.7°F



SQ2	MIN	79.2°F
	AVERAGE	81.1°F
	MAX	82.9°F

**Parameters**

Distance	18 m
Humidity	52%
Emissivity	0.85
Reflected Temp	87.0°F

**Image Info**

Model	M3T
Serial Number	1581F5FJC242G00DRM3
Focal Length	9.1 mm
Aperture	f/1.0
Width	640
Height	512
Created	2024/05/26 21:36:01
Modified	2024/05/27 09:31:54
Coordinates	32.789714, 96.784756

**Annotations**

KEY	VALUE
SQ1	Moisture affected
L1	Moisture affected

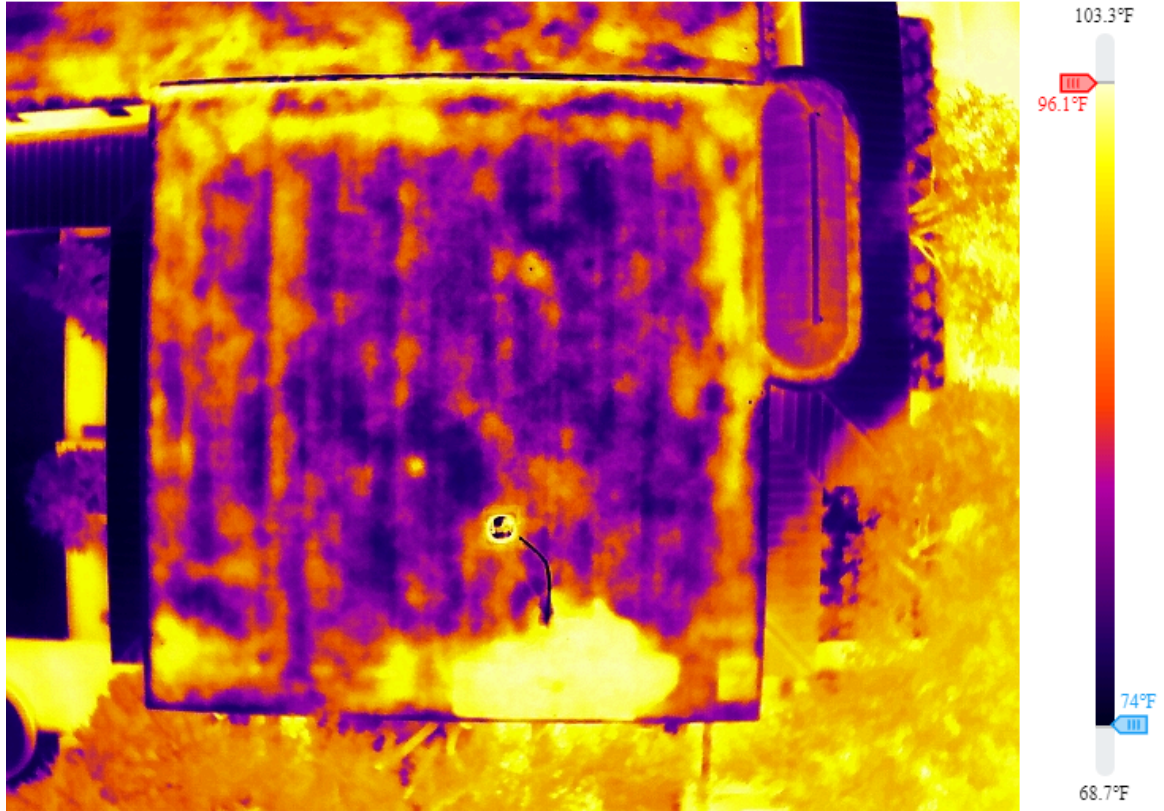
SQ2	Not moisture affected
-----	-----------------------

**Remarks**

Significant amount of suspected moisture along east edge and running from east to west



3003 Swiss Ave



West (Cobb).JPG

2024/05/26 21:32:59

**Parameters**

Distance	18 m
Humidity	52%
Emissivity	0.85
Reflected Temp	87.0°F

**Image Info**

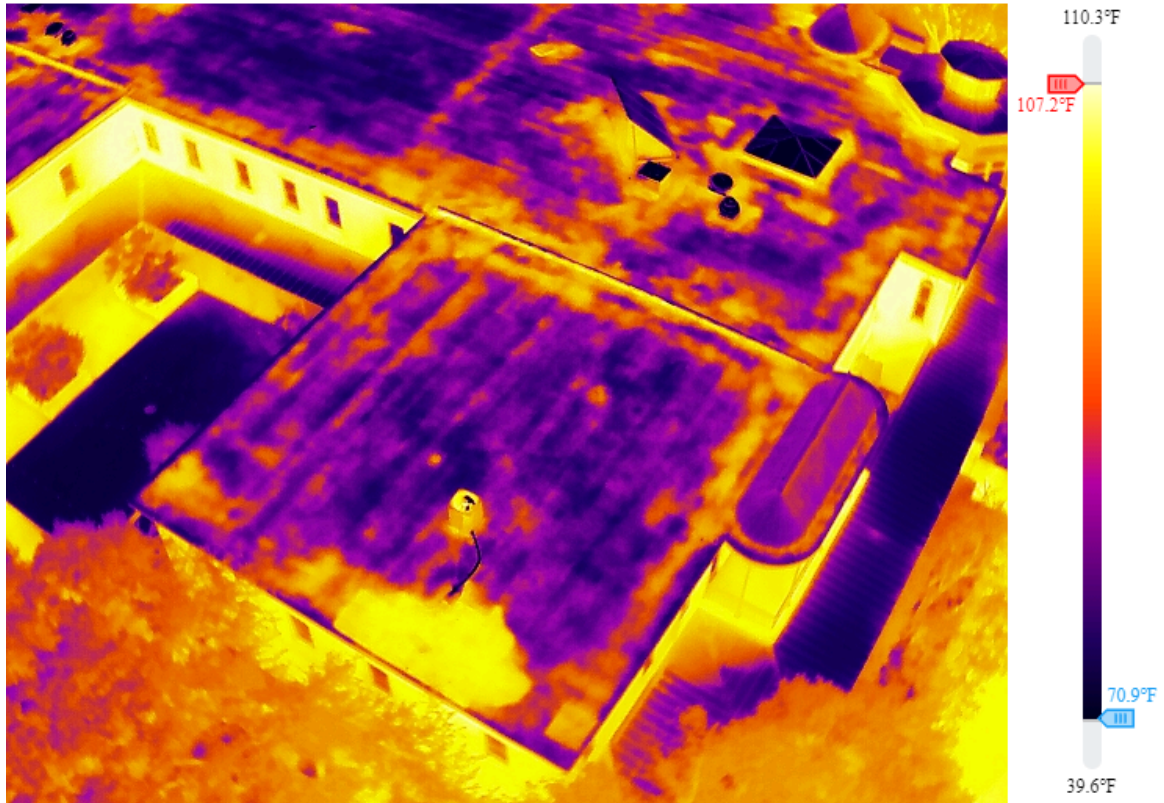
Model	M3T
Serial Number	1581F5FJC242G00DRM3
Focal Length	9.1 mm
Aperture	f/1.0
Width	640
Height	512
Created	2024/05/26 21:32:59
Modified	2024/05/27 09:39:32
Coordinates	32.789726, 96.785137

**Remarks**

Significant amount of suspected moisture along all edges of western roof section along with sizeable portion on very western edge



3003 Swiss Ave



West Corner View.JPG

2024/05/26 21:39:48

### Parameters

Distance	18 m
Humidity	52%
Emissivity	0.85
Reflected Temp	87.0°F

**Image Info**

Model	M3T
Serial Number	1581F5FJC242G00DRM3
Focal Length	9.1 mm
Aperture	f/1.0
Width	640
Height	512
Created	2024/05/26 21:39:48
Modified	2024/05/27 08:58:51
Coordinates	32.789783, 96.785406